

New



“COUNTRY BLUE”

FRANKOMA POTTERY
MADE IN U.S.A.
1988

Why Frankoma-?

THE FRANKOMA STORY

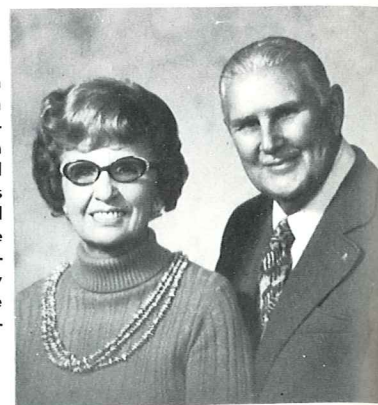
FRANKOMA POTTERY has rightfully earned its position as America's outstanding creators of "useful and beautiful" earthenware. The colors, textures and crafted designs are created at Frankoma, and are unique in American ceramics. Frankoma entered the field of ceramics in 1933, utilizing the heritage left it by its predecessors, the South-west Indians. Our aim was to combine the traditional art of the Indians, the spirit of the American Pioneer and the creative tendencies of the youth of the Great Southwest, and mold them into good pottery forms.

John Frank, originator of "Frankoma," came to Oklahoma from Chicago in 1927. His teaching Art and Pottery at the University of Oklahoma and his work with the geological survey - unearthing the Oklahoma clay deposits - brought together valuable material for his future venture of "potting." In 1933 he started a "studio" pottery in Norman, Oklahoma, - equipped with one small kiln, a butter churn for mixing clay, a fruit jar for grinding glazes and a few other crude tools and tables. It was necessary to continue teaching until enough ware was produced to prove that a product could be made of Oklahoma clays that was a contribution to Art and Ceramics and still salable. Resigning his teaching in 1936 he and his wife, Grace Lee, working side by side, set out on a venture of creating beautiful pottery for every day living. They felt the need of using Oklahoma clays for Oklahoma's first pottery. First a clay from Ada was used, then in 1954 a red burning clay dug at Sapulpa became the basis for all Frankoma ware. In 1938 the "studio" grew into a small factory as it moved from Norman to Sapulpa, where it is now. (Original plant 5,500 square feet; through the years it has grown to the existing 79,000 square feet.)

Frankoma demanded of itself to make as fine a pottery as could be made considering the limitations of its materials. This means constant research to take advantage of raw materials and processes as they are brought to light.

Pottery enjoys so many advantages over the more "refined" and delicate ceramic wares. Frankoma Pottery is manufactured by its unique once-fired process - clay body and colored glaze are fused and fired at the maturing point of the clay, and tempered as it slowly cools. It can be used "indoors-outdoors" because of its ruggedness and durability. It can really "take" the handling of every day use. It can be used in a dishwasher. It is also ovenproof and food can be served in the same dish in which it is baked or prepared. It also keeps foods and drinks hot much longer. Color is such an indispensable part of today's decor, and Frankoma creates an exciting wide range of colors and textures. Our "Rutile Art Glazes" which have identified Frankoma's unique tableware around the world have successfully been produced only on our colored earthenware clay. The first to introduce colored din-

Grace Lee and The Late John Frank exemplify true American determination and the Free Enterprise System. They started with only a dream, and through hard work created one of America's most unique potteries recognized the world over. 1971 they were named, "National Small Businessman of the Year" and personally recognized by the President of the United States for their accomplishments.



Grace Lee and The Late John Frank
(pictured January 1973)

nerware on the market in the 1940's was one of the basic reasons John Frank was presented the award "1972 Marketing Man of the Year."

Mr. Frank passed away November 10, 1973. Grace Lee, although semi-retired still contributes to Frankoma's designs and policies.

The Business continued after Mr. Franks death under the leadership of their daughter Joniece Frank and a trained, dedicated staff.

COUNTRY BLUE

(front cover)

Availble in most items and Plainsman Dinnerware: All accessories and flower containers.



MOUNTAIN HAZE

Available in most items and dinnerware.

All accessories and flower containers are available.

FRANKOMA STANDARD COLORS



BROWN SATIN—BR



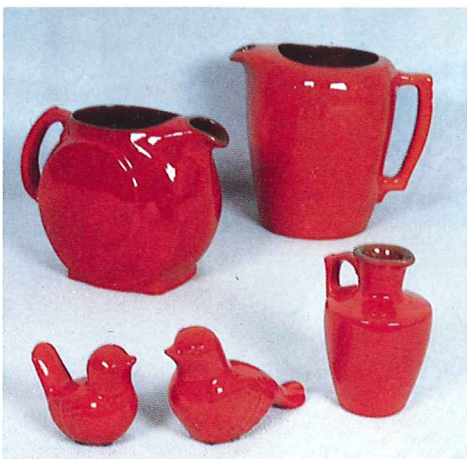
PRAIRIE GREEN—GR



DESERT GOLD—GO



AUTUMN YELLOW—YL



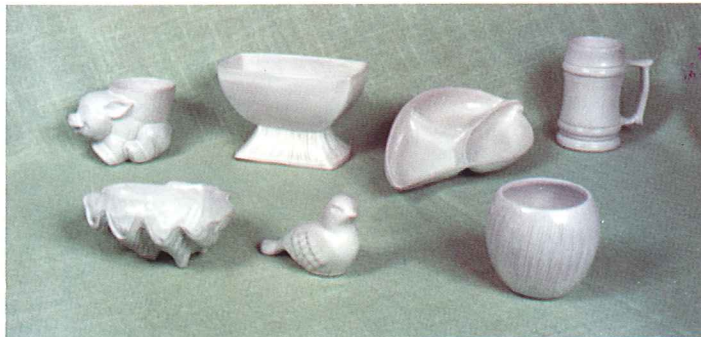
FLAME—FL — Add 50%



ONYX BLACK—BK



ROBIN EGG BLUE—BL



WHITE SAND—WH

SPECIAL COLORS



TERRA COTTA—TC



COFFEE BROWN—CF



NAVY BLUE — NB

Appropriate Containers for Flower Arrangements and Planters



V-14—DESERT GOLD/COFFEE
20.00



V-14—BLACK/WHITE
20.00



V-14—FLAME/BLACK
20.00



V-14—COFFEE/DESERT GOLD
20.00



V-14—WHITE/NAVY BLUE
20.00



302—6" CANDLE VASE
4.75



4SC—5" CUP-BOWL
3.75



26LC—4½"—6 OZ.
TUMBLER VASE 3.25



M2—6"—18 OZ.
MUG 4.50



5M—5½"—16 OZ.
MUG 4.50



4M—4½"—18 OZ.
MUG 4.50



23A—6" SQ. PEDESTALLED
VASE 6.50



F52—7" PEDESTALLED
URN 6.50



176—4" PLANTER
4.00



F33—3¾x7" FLUTED PLANTER
5.50



T7—3½" COCONUT PLANTER
2.75



95—8½"
FREE FORM VASE
6.50



37—4" HEXAGONAL
PLANTER
3.25



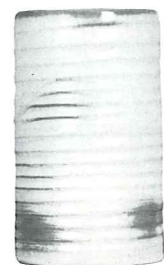
65—6½" HEXAGONAL
VASE
6.50



64—9½" OCTAGONAL
VASE
7.75



72—10" RINGED
CYLINDER VASE
6.50



172—6½" RINGED
CYLINDER VASE
4.75



272—4" RINGED
CYLINDER VASE
3.25

BUD VASES



20—6"
3.75



31—6"
3.25



28—6½"
3.25



38—6"
3.75



47—5"
3.75



40—5"
3.25

Small containers perfect for miniature or dried arrangements.



5DB 3.25



BP 2.75



XO 1.50



504 2.75



4Y 3.00



6BO 3.25



94BO 3.25

Appropriate Containers for Flower Arrangements and Planters



178—4¾" SWIRL PLANTER
3.00



177—5½" SWIRL PLANTER
3.00



212—8" ROUND BOWL
5.50



212-2—6½" ROUND BOWL
4.00



212-3—5¾" ROUND BOWL
3.00



256—6" KETTLE PLANTER
6.00



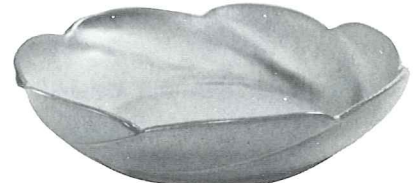
258—7½" STAR PLANTER
5.00



22A—5" FOOTED VASE
4.75



22—7" FOOTED ROUND VASE
6.50



218—12" SCALLOPED BOWL
7.75



235—6" FLOWER ARRANGER
5.50



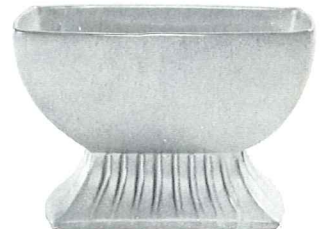
F29—6" DRAPERY VASE
5.50



234—7½" FREEFORM BOWL
6.00



14—8" PLANTER
6.50



17—8 x 3" PLANTER
6.50



913—9" DUTCH SHOE PLANTER
5.50



228—8" SWAN PLANTER
6.75



208A—9½" MALLARD PLANTER
6.75



208—12" MALLARD PLANTER 10.00



35—4x6" FOOTED PLANTER
3.75



4N—8" BOWL
4.75



4XL—7" BOWL
3.75



6N—7½" BOWL
4.75



224—8" ROUND BOWL
6.50



433—BOOT BOOKENDS 20.00
Not Available in Terra Cotta.



133—6½" BOOT VASE
4.50



134—4" BOOT 2.75



C-33—5" BOOT MUG
4.00



396—7" TURTLE PLANTER
5.00

AVAILABLE IN 10 STANDARD COLORS PLUS COFFEE BROWN, NAVY BLUE & TERRA COTTA, EXCEPT WHERE NOTED. ADD 50% FOR FLAME.
SEE PAGE 3 FOR COLOR CHART. SIZES ARE APPROXIMATE AND MAY VARY SLIGHTLY.

Appropriate Containers for Flower Arrangements and Planters

HONEY JUGS — SYRUP PITCHERS — FLOWER CONTAINERS

HONEY JUGS Not Available in Terra Cotta.



803—HONEY JAR W/LID 4.75



838—10 OZ. PITCHER 3.25



831—16 OZ. PITCHER 3.75



833—24 OZ. PITCHER 3.75

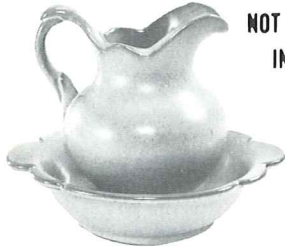


835—24 OZ. PITCHER 3.75



8—24 OZ. PITCHER 3.75

F30A—5½" PITCHER 6.00
F30B—7" BOWL 4.00



F30AB—PITCHER & BOWL SET 10.00

40A—4" PITCHER 4.75
40B—5" BOWL 3.00

NOT AVAILABLE
IN FLAME



40AB—PITCHER & BOWL SET 7.75



70-A—7" RINGED JARDINIERE 9.25



70-B—5½" RINGED JARDINIERE 6.50



201—9" BOWL 4.75



173
5" OCTAGONAL
PLANTER 4.50



B3—4½" CORK BARK PLANTER 4.75



A6—6" JARDINIERE 4.00



390—6" ELEPHANT PLANTER 5.50



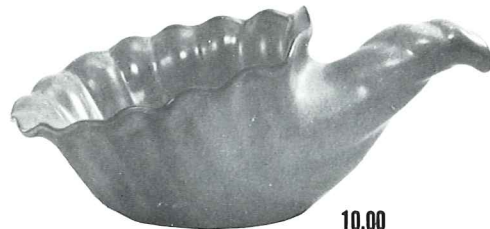
391—6" PIG PLANTER 5.50



71—10" LEAF HANDLED VASE 15.00



T9
7" SHELL BOWL 3.75



222—12" CORNUCOPIA 10.00
(Not Available in Flame)



57—7" CORNUCOPIA 5.50

ASH TRAYS

Not Available in Terra Cotta.



*167—3½" MINIATURE HORSESHOE 2.50



458—7" THREE SIDED 5.00



474—4" ROUND ASH TRAY 3.25



477—4" Dogwood 2.25



512—4" Leaf 2.25



513—4" Clover 2.25



463—4" Arrowhead 2.25



170—Turtle Paper Weight 2.50

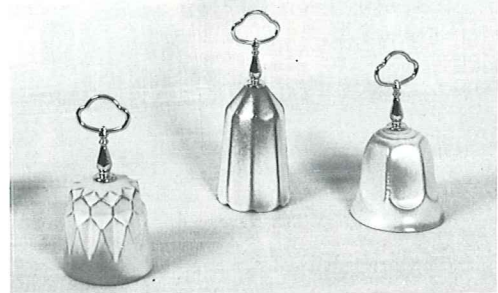


453—7" ARROWHEAD 5.00



469—4½" SAFETY ASH TRAY 3.25

MINIATURES: Appropriate for Pin Trays, Nut Cups, Ash Trays, etc.



817—6" TABLE BELL 6.50 815—7" TABLE BELL 6.50 814—6" TABLE BELL 6.50

Available in 10 Standard Colors plus Coffee Brown, Navy Blue and Terra Cotta

Accessories for All Dinner Ware Patterns

"MUGS" for coffee, tea, milk, chocolate, soup, soda. YOU NAME IT! (see page # 5 for color chart) — 8 to 11 Oz. MUGS boxed 4 to a box **3.25 per Mug**



C1



C2



C3



C4



C5



C6



C7



C9



C10



C12



C13



C33 4.00

DEMITASSE CUPS FOR COFFEE, TEA AND JUICE



1T—Toothpick Holder 2.50



1C—3 Oz. 2.75



5CC—5 Oz. 2.75



26DC—3 Oz. 3.25

INDIVIDUAL — MINIATURE — SUGAR & CREAMERS



553—Creamer 3.25
504—Sugar 2.75



5DB—6 Oz. Sugar 3.25
5DA—6 Oz. Creamer 3.25



M2—18 Oz. Stein 4.50



5M—16 OZ. MUG 4.50



7M—14 OZ. MUG 4.50



5LC—6 Oz. Juice 3.25



5L—12 Oz. Tumbler 3.75



26LC—6 Oz. Tumbler 3.25



4Y—6" Spoon Holder 3.00



4M—18 OZ. MUG 4.50



NOT AVAILABLE

94M—16 OZ. MUG 4.50



4SC—11 Oz. Soup Cup 3.75



6T—6 Cup Teapot 9.25



6J—2 Cup Teapot 6.50



26D—1 Qt. Pitcher 6.50



81—1 Qt. Pitcher 6.50



80—2 Qt. Pitcher 9.25

6" FELTED TRIVETS — HOT PLATES

Available in all Colors Except Terra Cotta



BTR—Butterfly



OTR—Owl



94TR—Rooster



3TR—Spanish Iron



8TR—Bird



UCTR—Unicorn



0K3—5 Civilized Tribes Trivet



7TR—Cherokee Alphabet

Available only in Gold, Green, White & Flame
3.00

AVAILABLE IN 10 STANDARD COLORS PLUS NAVY BLUE & COFFEE BROWN EXCEPT WHERE NOTED, ADD 50% FOR FLAME. SEE PAGE 3 FOR COLOR CHART

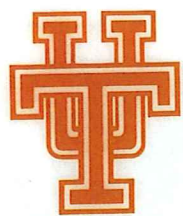
GLAZE LITHO TRANSFERS

STOCK TRANSFER PAGES 8 - 9

SUGGESTED ITEMS FOR TRANSFERS PG.10

ORDER BY ITEM AND TRANSFER NUMBER

LET US PROMOTE YOU YOUR AREA - YOUR EVENT



1



2



4



5



6



7



8



9



10



18



32-6 ASST



34



35



36



37



43



44-1" Tall
45-1 1/2" Tall



46-1 1/2" Tall
47-2 1/4" Tall



48



49



52



54



56



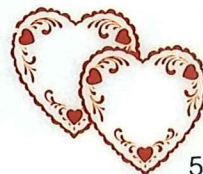
55



57



58



59



60



61



62



64



65

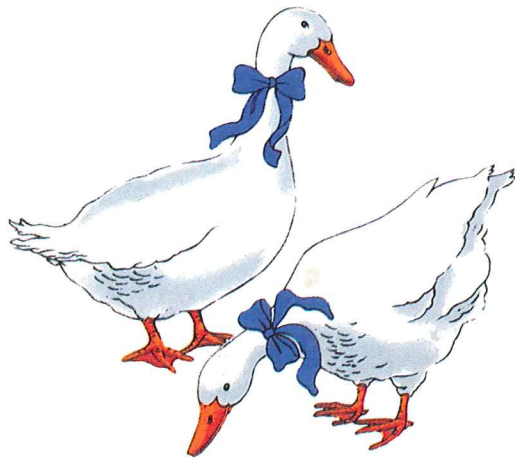


66



71

CONTACT US FOR SPECIAL DESIGNS



D-150



67 - 1 1/4" Tall
72 - 2 1/4" Tall
78 - 3" Tall



68 - 1 1/4" Tall
73 - 2 1/4" Tall
79 - 3" Tall



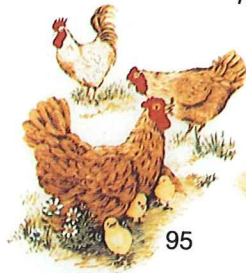
69 - 1 1/4" Tall
74 - 2 1/4" Tall
80 - 3" Tall



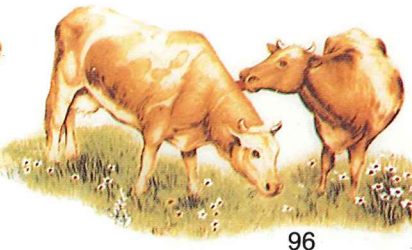
70 - 1 1/4" Tall
75 - 2 1/4" Tall
81 - 3" Tall



84 - 3" Tall
85 - 4 1/2" Tall



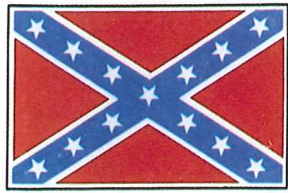
95



96



97



100



101



109



103



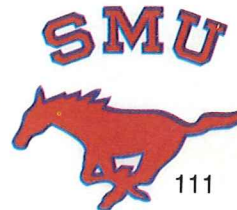
106



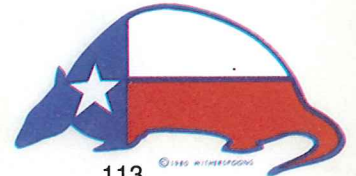
107



108



111



113

ARKANSAS



117



122

The University of Texas VALLEY CITY



126



128



129



130

HOUSTON



131



132



133



MEMPHIS STATE TIGERS

134



135 - 2" Tall
136 - 4 1/2" Tall



137 - 2" Tall
138 - 4 1/2" Tall



139 - 2" Tall
140 - 4 1/2" Tall



141



142



143



144



145



146

ITEMS FOR CERAMIC TRANSFERS



C12-5.00

5LC-4.75

5CC-4.25

5DA
-4.75

5DB
-4.75

35-5.25

37-4.75

459-4.50

4Y-4.50

C2-5.00

5L-5.25

C15/B-6.50

5M-6.50

M2-6.50

4M-6.50

C1-5.00

6T-10.75

6J-8.00

23A-8.00

14-8.00

17-8.00

80-10.75

81-8.00

4D-10.75

64-9.25

65-8.00

5LC SET-30.75

458-6.50

6G-5.00

5E-4.25

235-7.00

173-7.50

265/B
-4.00

LGC-4.50

461-4.25

CL-22.00

6F-10.00

DTR-4.50

MC86-5.00

26LC

-4.75

BATH SETS AND ACCESSORIES



410 Set 25.00



411 Set 32.00



412 Set 32.00

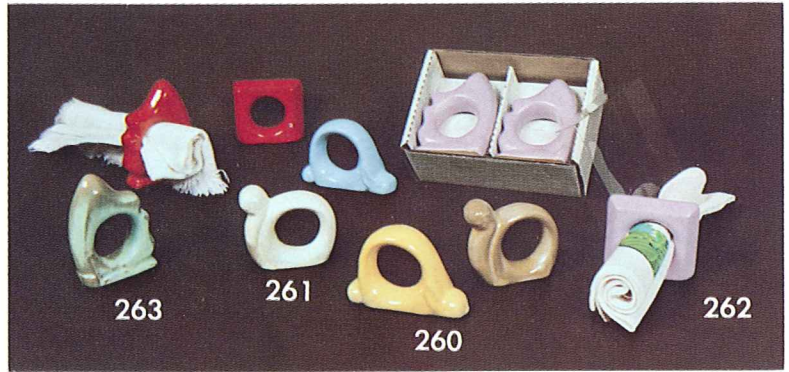


413 Set 13.00



SOUGHT AFTER IN HOME DECOR — boxed sets
 Available in 10 Standard Colors plus Navy Blue and Coffee Brown. Add 50% for Flame.

Accessories



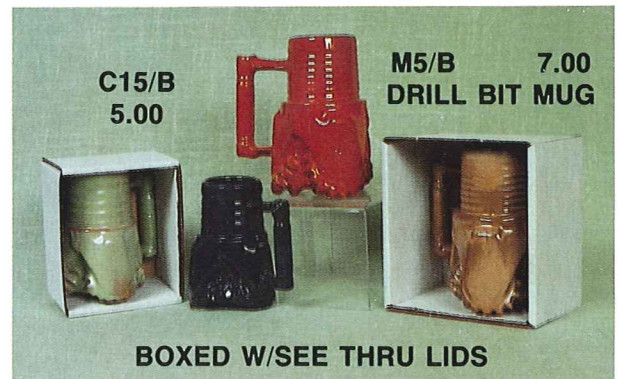
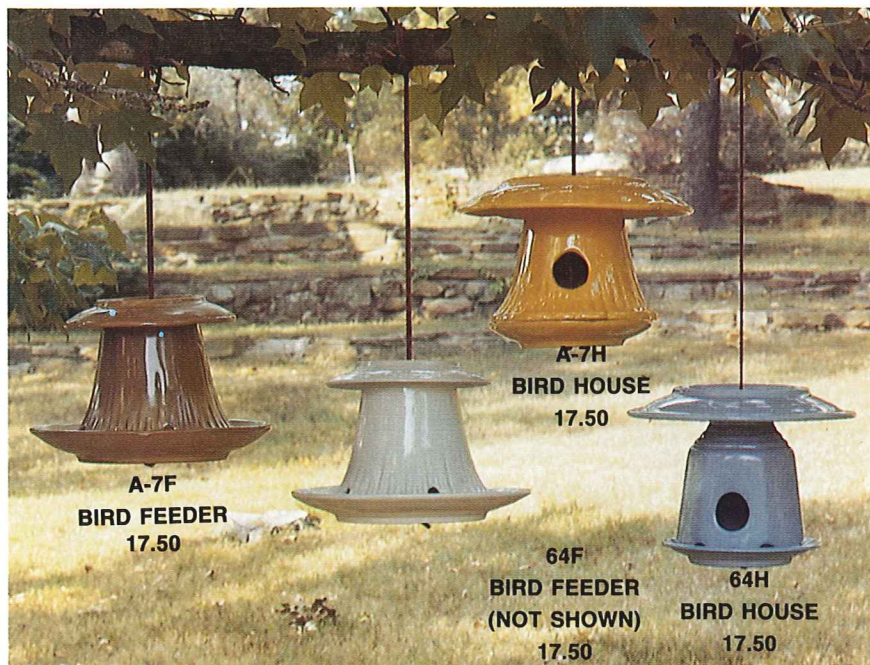
NAPKIN RINGS
BOXED 4 PER BOX W/SEE THRU LID \$12.00 PER BOX



Place oven warmed bread tile in bread server, cover with cloth napkin. Bread remains warm throughout your meal.



BIRD FEEDERS — BIRD HOUSES



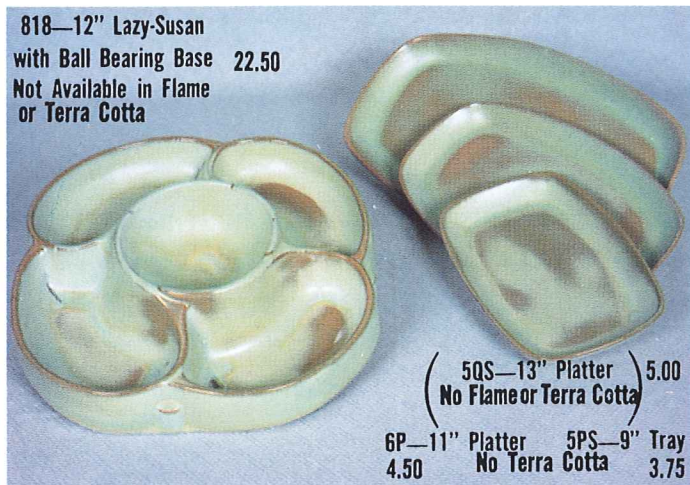
TRAYS SUITABLE FOR RELISH, NUTS, JELLIES, SALADS AND CANDY



T9
7" SHELL BOWL 3.75
204A—DOGWOOD TRAY 3.25
No Flame 3.25
473—6½" SHELL TRAY



223—6" FOUR LEAF CLOVER 3.50
83—12" Division Relish Dish 6.50
225—7" LEAF TRAY 3.50
Not Available in Flame or Terra Cotta.



818—12" Lazy-Susan
with Ball Bearing Base 22.50
Not Available in Flame
or Terra Cotta

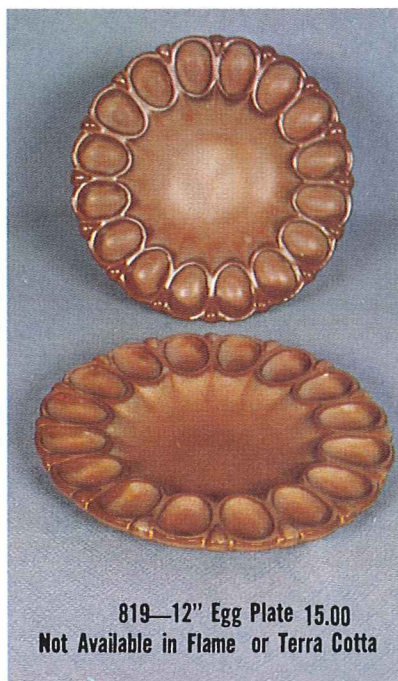
(5QS—13" Platter) 5.00
(No Flame or Terra Cotta)
6P—11" Platter 4.50
5PS—9" Tray 3.75
No Terra Cotta



T10—12" SHELL BOWL 17.50
T9—7" SHELL BOWL 3.75
(Center piece or Salad set)
(No Terra Cotta or Flame)



222—12" CORNUCOPIA No Flame 10.00
57—7" CORNUCOPIA 5.50



819—12" Egg Plate 15.00
Not Available in Flame or Terra Cotta



10.00
809 - 9½" EGG PLATE
Not Available in Flame or Terra Cotta



Not Available in Flame or Terra Cotta.

808 Relish Dish 15.00



Not Available in Flame
or Terra Cotta.

227—17" LEAF TRAY 20.00

225—7" LEAF TRAY 3.50

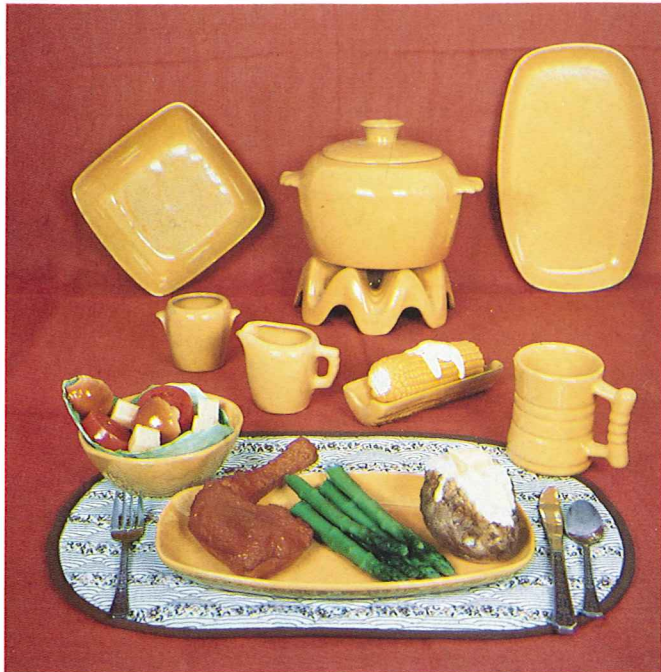
226—11" LEAF TRAY 6.50



No Terra Cotta

7.50
WA1—8" Warmer w/Candle
WA3—6" Warmer w/Candle 5.00

PLATTER STYLE DINING



Casual — Informal — Comfortable
 Try platter style dining once, and never return to
 Dining in the Round

6PLS SET 36-PIECE SERVICE SET FOR EIGHT Boxed 115.00
6PLS Set Not Available in Terra Cotta

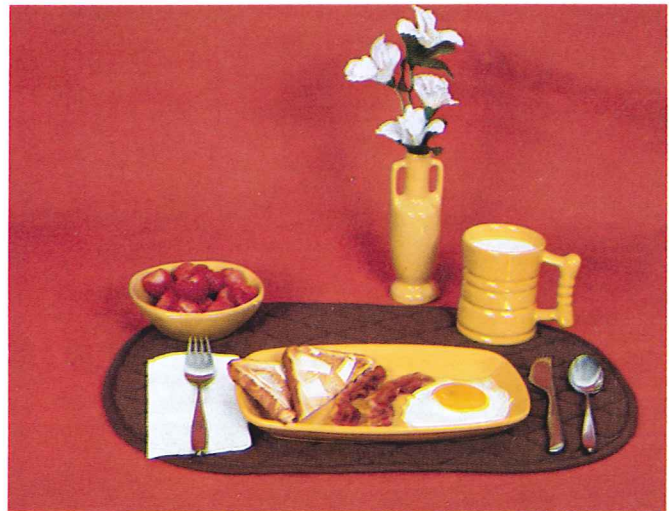
- | | |
|-------------------|--------------------|
| 8—C3—Mugs | 1—5Q —13" Platter |
| 8—6P—11" Platters | 1—5DA—Creamer |
| 8—5PS—9" Platters | 1—5DB—Sugar |
| 8—14-oz Bowls | 1—5NS—9" Veg. Bowl |

5QSL5 SET 36-PIECE SERVICE SET FOR EIGHT Boxed 125.00
5QSL5 Set Not Available in Flame or Terra Cotta

- | | |
|--------------------|--------------------|
| 8—C3—Mugs | 1—5Q—13" Platter |
| 8—5QS—13" Platters | 1—5DA—Creamer |
| 8—5PS—9" Platters | 1—5DB—Sugar |
| 8—14-oz. Bowls | 1—5NS—9" Veg. Bowl |



**B
S
E
T**



12 PIECE BREAKFAST SET (Boxed) 35.00 4 — 5XS 10 OZ. BOWLS 4 — 5PS PLATTERS 4 — C3 MUGS



**L
S
E
T**



12 PIECE LUNCHEON SET (Boxed) 38.50 4 — 5X 14 OZ. BOWLS 4 — 6P PLATTERS 4 — C3 MUGS

"B" Set and "L" Set Available in 10 Standard Colors plus Coffee Brown and Navy Blue.

Add 50% for Flame.

NEW DINING EXPERIENCE



MEXICAN SET — (M-SET) PLACE SETTING FOR 4

- 4—Spill proof Taco holders
 - 4—14 oz. Bowls
 - 4—11" Platters (6P)
 - 4—26LC 6 oz. Tumblers
- 55.00**

MEXICAN STYLE DINING: Platters offer space to separate food. Taco holder keeps your Taco looking appetizing and on the server. All dishes ovenproof, serve it "HOT" and keep it that way.



FONDUE SET — (F-SET) PLACE SETTING FOR 4

- 4—11" Platters (6P)
 - 4—14 oz. Salad Bowls
 - 4—26LC 6 oz. Tumblers
 - 12—XO 3 oz. Dip Dishes
- 53.00**

FONDUE STYLE DINING: Formal or casual, have your guests admiring the decor, and enjoying those secret dips which enhance the meal.



ORIENTAL SET — (O-SET) PLACE SETTING FOR 4

- 4—11" Platters (6P)
 - 4—14 oz. Bowls
 - 4—5CC 5 oz. Tea Cups
 - 8—XO 3 oz. Sauce Dishes
- 45.00**

ORIENTAL STYLE DINING: Serve your Oriental meal on dinnerware designed for the proper table. Sweet and Sour dishes and Tea cups to make your dinner look authentic Oriental.

Available in 10 Standard Colors plus Navy Blue and Coffee Brown. Add 50% for Flame.

Gourmet Items



5NC/D 20.00



266 TORTILLA SERVER 10.00



265/B
COASTERS
12.00

BOXED 4 PER BOX
W/SEE THRU LID



#280-4 LAZYBONES
#281-4 LAZYBONES
#280-5 PLAINSMAN
#281-5 PLAINSMAN

\$19.00

#281 3 TIER W/SAUCER

91/S
\$6.00

#280 3 TIER W/BOWL
\$19.00



72 SET
\$23.00

PASTA
CANNISTER SET



247—SOUP LADLE 7.50
(Not Available in Flame)

245—2 QT. SOUP TUREEN 9.25
245/W—TUREEN W/WARMER 16.50
245/P—TUREEN W/PLATE 14.50

246—3 QT. SOUP TUREEN 13.25
246/W—TUREEN W/WARMER 20.50
246/P—TUREEN W/PLATE 18.50



4V—2 QT. BAKER/BEAN POT 9.25
4V/W—BAKER/W WARMER SET 16.50

4Y
3.00

4W—3 QT. BAKER/BEAN POT 13.25
4W/W—BAKER/W WARMER SET 20.50



6U
18 OZ. BAKER
6.50

6VS—1½ QT. BAKER 9.25
6VS/W BAKER & WARMER SET 16.50

6V—2½ QT. BAKER 13.25
6V/W BAKER & WARMER SET 20.50



GREASE CONTAINER

Tired of messy grease jars? Then try Frankoma's idea! Insert empty 1 lb. coffee can, pour in bacon drippings or hot fat. Handy storage for re-use or if you wish, just remove filled can and dispose of neatly. Comes with metal strainer.

26GC

15.00



9.25 80—2 QT. PITCHER 5L—12 OZ. TUMBLER 3.75

Gift Sets



82C SET 33.00
(CARAFE, WARMER,
4 C12 MUGS)

82 SET (82—6 CUP CARAFE & LID 82W—WARMER) 20.00



6T—6 CUP TEAPOT 9.25 5DA—6 OZ. CREAMER 3.25
WA3—6" WARMER W/CANDLE 5.00 5DB—6 OZ. SUGAR 3.25



12.50 5D—3 QT. PITCHER 5M—16 OZ. MUG 4.50



6S—TWO-SPOUT GRAVY 6.50
5PS—9" PLATTER-TRAY 3.75
6S/ST—TWO-SPOUT GRAVY/W TRAY 10.00



SOUP AND SANDWICH SET
4SC—11 OZ. SOUP CUP 3.75
6P—11" PLATTER-TRAY 4.50

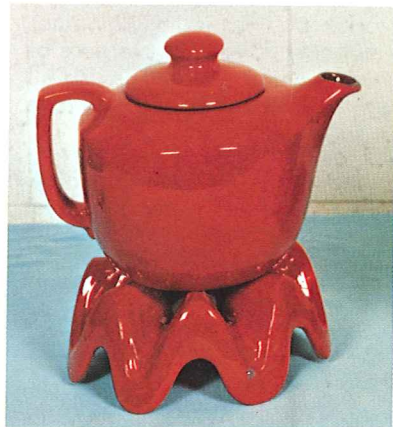


COFFEE AND DESSERT SET
3.75 5PS—9" PLATTER-TRAY
C2—10 OZ. MUG 3.25
(or choose your own style
Mug — See Pg. 9)



6J SET 16.50

6J—2 CUP TEAPOT 6.50
504—INDIVIDUAL SUGAR 2.75
553—INDIVIDUAL CREAM 3.25
6P—11" PLATTER TRAY 4.50



5TL/W—TEAPOT & WARMER SET 20.00
5TL—12-CUP TEAPOT WA1—WARMER
13.00 7.50



26 SET— 55.00
RINGED CANNISTER SET

18.50 14.25 12.00 11.00
26F—FLOUR, COOKIES, CORN MEAL 26S—SUGAR 26C—COFFEE 26T—TEA



26G—SUGAR/GREASE 26H—SALT & PEPPER
9.25 26GH—4-PIECE SET/BOXED 6.00
15.00



26DC SET
24.00

26D—1 QT. PITCHER 26DC—3 OZ. JUICE
6.50 91—TRAY 4.75 3.25



5LC SET
24.00

81—1 QT. PITCHER 5LC—6 OZ. JUICE
6.50 91—TRAY 3.25
4.75

Plainsman Pattern

AVAILABLE IN: Autumn Yellow, Desert Gold, Brown Satin, Navy Blue, and Prairie Green



DESERT GOLD



PRAIRIE GREEN



AUTUMN YELLOW



BROWN SATIN



NAVY BLUE

For thousands of years men have gloried in creating "atmosphere" around their favorite sport—eating. Harmonious and beautiful surroundings not only add to the pleasure of eating but make it a healthier pastime. We still lavish all we possibly can on our banquets and feasts, for we love to eat.

Today, from the crudest earthenware to the finest porcelain, we still choose CERAMICS of some kind for our table. Although we would not eliminate "whitewares," we love our modern pottery tableware. Why not? It is gay, happy, and colorful, and surely fits into our modern mode of living. It is with this in mind that we have created FRANKOMA TABLEWARE.

For one design we have gone to the Great Plains of the Southwest and offer you the "PLAINSMAN" pattern. Its well chosen, simple lines and sturdy shapes create an atmosphere benefitting its heritage. It is most appropriate "for fun or fashion." Every piece can be used in the microwave, oven and dishwasher.

**5LS—45 PC. SERVICE SET
FOR EIGHT, BOXED 137.50**

- 8 — Cups
- 8 — Saucers
- 8 — 14 Oz. Bowls
- 8 — 7" Plates
- 8 — 10" Plates
- 1 — 13" Platter
- 1 — Creamer
- 1 — Sugar
- 1 — Sugar Lid
- 1 — Serving Bowl

**5DTS—25 PC. DELUXE
STARTER SET—BOXED 75.00**

- Includes: Regular 20-Pc. Set
Plus 1—13" Platter
- 1—Creamer
 - 1—Sugar
 - 1—Sugar Lid
 - 1—Serving Bowl

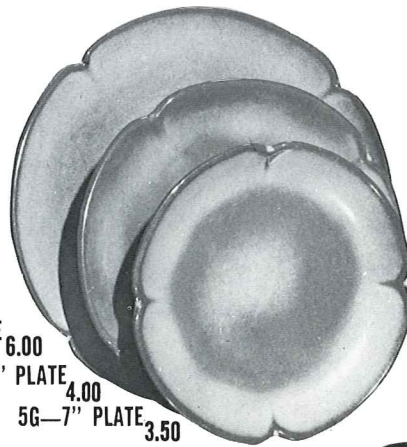
**5TS—20 PC. STARTER SET
FOR FOUR, BOXED 65.00**

- 4 — Cups
- 4 — Saucers
- 4 — 7" B & B Plates
- 4 — 10" Plates
- 4 — 14 oz. Chili-Soup Bowls

*5AB—CREAM & SUGAR SET 8.00



*5V—2 QT. BAKER/BEAN POT 9.25
*5V/W—BAKER/W WARMER SET 16.50



5F—10" PLATE 6.00
5FS—9" PLATE 4.00
5G—7" PLATE 3.50



*5M—16 OZ. MUG 4.50



*5A—12 OZ. CREAMER 3.25



*5B—SUGAR WITH LID 5.00



*5W—3 QT. BAKER/BEAN POT 13.25
*5W/W—BAKER/W WARMER SET 20.50



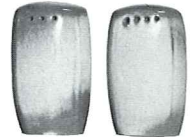
*5NS—9" VEGETABLE 4.75



*5CC—5 OZ. TEACUP 2.75



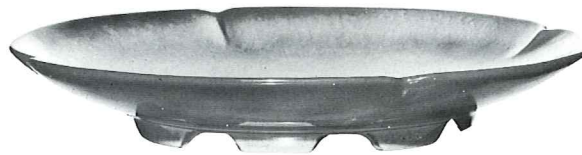
5C—CUP 3.25
5E—5½" SAUCER 2.75



*5H—SALT & PEPPER 4.75



*5N—4½" QT. BOWL 17.50



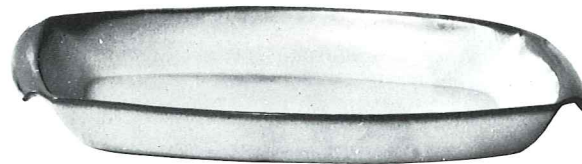
5FC—15" CHOP PLATE 25.00



*5LC—6 OZ. JUICE 3.25



*5L—12 OZ. TUMBLER 3.75



5P—17" PLATTER 17.50

*5Q—13" PLATTER 7.75



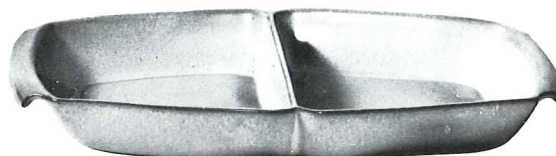
*5DB—6 OZ. SUGAR 3.25



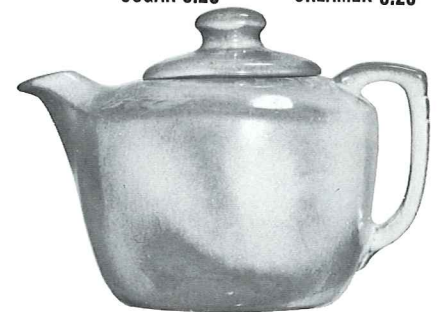
*5DA—6 OZ. CREAMER 3.25



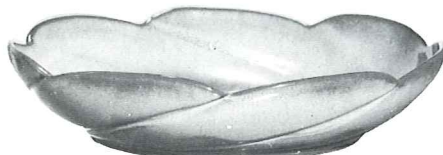
*5XL—20 OZ. BOWL 3.75
*5X—14 OZ. CEREAL 3.25
*5XS—9 OZ. FRUIT 2.75



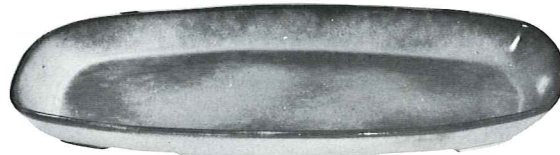
*5QD—13" DIVIDED BOWL 7.75



*5TL—12 CUP TEAPOT 13.00



*218—12" BOWL 7.75



5QS—13" PLATTER 5.00

*5PS—9" TRAY 3.75

*6P—11" PLATTER 4.50



*6S—TWO SPOUT GRAVY 6.50



*6T—6 CUP TEAPOT 9.25



*6J—2 CUP TEAPOT 6.50



*5D—3 QT. PITCHER 12.50

THIS PAGE AVAILABLE IN BROWN SATIN, DESERT GOLD, PRAIRIE GREEN, NAVY BLUE, & AUTUMN YELLOW EXCEPT WHERE NOTED*

*AVAILABLE IN: 10 STANDARD COLORS PLUS COFFEE BROWN AND NAVY BLUE — EXCEPT WHERE NOTED. M.H — C.B

ADD 50% FOR FLAME. Dinnerware Not Available in Terra Cotta. SIZES ARE APPROXIMATE AND MAY VARY SLIGHTLY. Page 19

Westwind PATTERN

AVAILABLE IN: Robin Egg Blue, Prairie Green, Autumn Yellow and White Sand, Navy Blue, Black; Black & White; Flame & White.



White Sand



Autumn Yellow



Prairie Green



Flame & White



Black & White



Robin Egg Blue



Navy Blue



Black

Set your table with these lovely color combinations: Black and White or Flame and White. They create new exciting table decor without being repetitious. The standard sets come with cup, bowl, sugar and creamer, serving bowl in black or flame (as depicted with asterisk*) and dinner plate, salad plate, saucer, platter in white. Use your own creative imagination when ordering other accessory pieces. Truly a new concept in eating fun. "Westwind," with its basic simple lines, permits freedom in expression of personality which is so important in smart contemporary homes. You'll LOVE "Westwind" — and, of course, it is all ovenproof and dishwasher proof.

SIMPLICITY in its truest form — that's "Westwind." The carefully broken line of the shallow coupe shape is the key to the pattern. The simple unbroken line of the cup handle, with its broad thumb rest, combines grace and security.

The large and small open bakers have rolled rims for safety and ease of handling. Cleaning is no task. Much care is exercised in making these "easy-grip" knobs on the lids. This oven-to-table pottery is truly the gourmet's delight.

The homemaker today appreciates the warm, cordial earthen colors in this unique pottery. Its waxy textures are so lovely to the touch. Such tableware should be selected for its artistic qualities as well as its serviceability. "Westwind," with its basic simple lines, permits freedom in expression of personality which is so important in smart contemporary homes. You'll LOVE "Westwind" — and, of course, it can be used in the microwave, oven and dishwasher.

6LS—45 PC. SERVICE SET FOR EIGHT, BOXED 137.50

- 8 — Cups
- 8 — Saucers
- 8 — 14 Oz. Bowls
- 8 — 7" Plates
- 8 — 10" Plates
- 1 — 13" Platter
- 1 — Creamer
- 1 — Sugar
- 1 — Sugar Lid
- 1 — Serving Bowl

6LSFW — Flame & White 165.00

6DTS—25 PC. DELUXE STARTER SET—BOXED 75.00

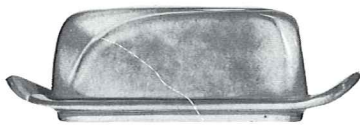
- Includes: Regular 20-Pc. Set
Plus 1—13" Platter
- 1—Creamer
 - 1—Sugar
 - 1—Sugar Lid
 - 1—Serving Bowl

6DTSF — Flame & White 95.00

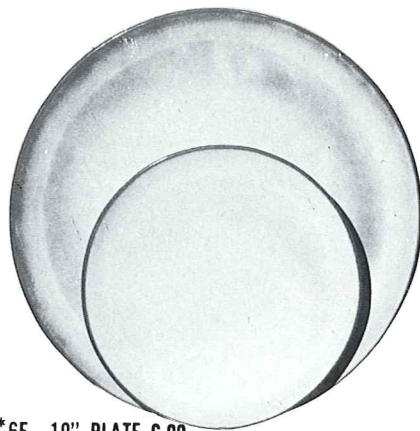
6TS—20 PC. STARTER SET FOR FOUR, BOXED 65.00

- 4 — Cups
- 4 — Saucers
- 4 — 7" B & B Plates
- 4 — 10" Plates
- 4 — 14 oz. Chili-Soup Bowls

6TSFW — Flame & White 71.50



4K—BUTTER DISH
6.50



*6F—10" PLATE 6.00

*6G—7" PLATE 3.50



6B—SUGAR WITH LID
5.00

6AB—CREAM & SUGAR SET
8.00



6A—9 OZ. CREAMER
3.25

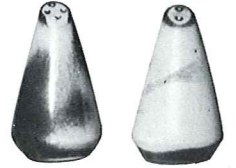


6U—18 OZ. BAKER FOR TWO
A COVERED CANDY DISH 6.50



*6C—CUP 3.25

*6E—5" WELLED SAUCER 2.75



6H—SALT & PEPPER
4.75



6VS—1 1/2 QT. BAKER 9.25
6VS/W BAKER & WARMER SET 16.50



5LC—6 OZ. JUICE 3.25



5L—12 OZ.
TUMBLER
3.75



81—1 QT. PITCHER 6.50



249 TACO HOLDER
BOXED 2 PER BOX 10.00
Not Available in Flame



6V—2 1/2 QT. BAKER 13.25
6V/W BAKER & WARMER SET 20.50



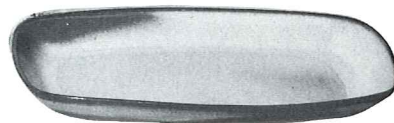
6T—6 CUP TEAPOT 9.25



80—2 QT. PITCHER 9.25



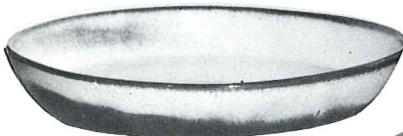
6J—2 CUP TEAPOT
6.50



5QS—13" STEAK PLATE (SHALLOW PLATTER) 5.00

6P—11" STEAK PLATE 4.50

5PS—9" TRAY 3.75



91—10" BAKING DISH
4.75



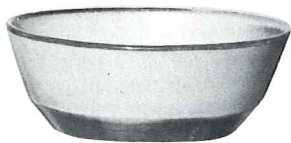
XO—3 OZ.
SINGLE SERVING
BOWL 1.50



242
2.50 CORN DISH



243—6 1/2" CRESCENT SALAD
2.50



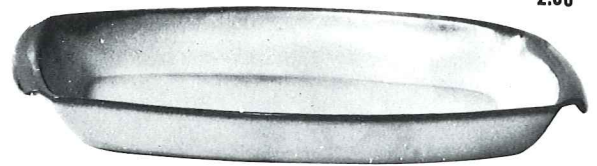
6N—1 QT. BOWL
4.75



6X—14 OZ. CHILI SOUP 3.25
6XS—10 OZ. FRUIT 2.75

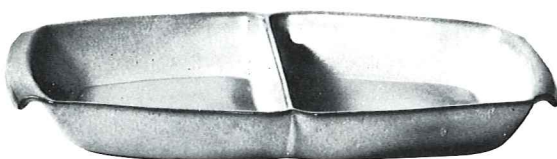


6S—2 SPOUT GRAVY
6.50



17.50
5P—17" DEEP PLATTER

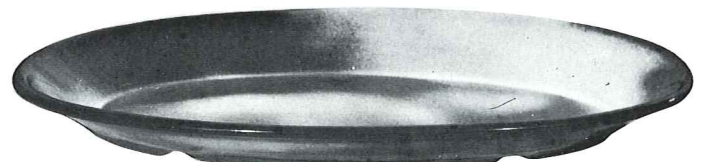
7.75
5Q—13" DEEP PLATTER



5QD—13" DIVIDED BOWL
7.75



BP—6 OZ. BEAN POT
OR CUSTARD
2.75



TP—17" OVAL PLATTER
17.50

THIS PAGE AVAILABLE IN 10 STANDARD COLORS PLUS COFFEE BROWN AND NAVY BLUE — EXCEPT WHERE NOTED. ADD 50% FOR FLAME.

* Not Available in Desert Gold, Brown Satin, Coffee Brown and Flame

LAZYBONES Pattern

AVAILABLE IN: Brown Satin, Desert Gold, Prairie Green, Coffee Brown, Robin Egg Blue



BROWN SATIN



DESERT GOLD



PRAIRIE GREEN



ROBIN EGG BLUE



COFFEE BROWN

Our American homes are being designed and built so that home makers can take advantage of the many modern conveniences yet develop their own personalities in color and styling.

The furnishings for these contemporary homes are practical and simplified. They must be selected carefully to preserve a cordial atmosphere, which we all wish for our family and friends.

Frankoma was sensitive to these trends when this new dinnerware was being designed. The atmosphere surrounding LAZYBONES is relaxing, for you are influenced by its free flowing sculptured lines. As you accept the invitation to handle and caress each piece, you will love the way they fit the contour of your hands, for immediately they become a part of you.

Food cooked in Lazybones can go from the oven to the table – and there are so many uses for each piece. They are designed to serve!

Notice the array of Frankoma's colors. They are the gourmet's delight, for they all compliment your food and share in making every meal an occasion. The shapes themselves are both practical and beautiful.

When you set your table with Lazybones, you are set to relax, and enjoy your share of casual living. It will be the "Talk of the Table" with your family and friends.

4LS-45 PC. SERVICE SET FOR EIGHT, BOXED 137.50

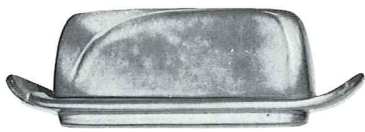
- 8 – Cups
- 8 – Saucers
- 8 – 14 Oz. Bowls
- 8 – 7" Plates
- 8 – 10" Plates
- 1 – 13" Platter
- 1 – Creamer
- 1 – Sugar
- 1 – Sugar Lid
- 1 – Serving Bowl

4DTS-25 PC. DELUXE STARTER SET-BOXED 75.00

- Includes: Regular 20-Pc. Set
Plus 1-13" Platter
- 1-Creamer
 - 1-Sugar
 - 1-Sugar Lid
 - 1-Serving Bowl

4TS-20 PC. STARTER SET FOR FOUR, BOXED 65.00

- 4 – Cups
- 4 – Saucers
- 4 – 7" B & B Plates
- 4 – 10" Plates
- 4 – 14 oz. Chili-Soup Bowls



*4K—BUTTER DISH
6.50



4F—10" PLATE 6.00
4G—7" PLATE 3.50
4E—5" SAUCER 2.75



2.75
*5CC—5 OZ. TEACUP



3.25
*4X—14 OZ. CEREAL



*5L—12 OZ.
TUMBLER
3.75



*5LC—6 OZ.
JUICE
3.25



4C—CUP
3.25



3.00
*4Y—6" SPOON HOLDER



*4H—SALT & PEPPER
4.75



*4SC—11 OZ. SOUP CUP
3.75



9.25 *4V—2 QT. BAKER/BEAN POT
16.50 *4V/W—BAKER/W WARMER SET



4A—8 OZ. CREAMER
3.25



4B—SUGAR WITH LID
5.00



*4M—18 OZ. MUG
4.50

4AB—CREAM & SUGAR SET
8.00



*4N—24 OZ. VEGETABLE
4.75



*4P—13" PLATTER
7.75



*M2—18 OZ. STEIN
4.50



*224—8" ROUND BOWL
6.50



13.25 *4W—3 QT. BAKER/BEAN POT
20.50 *4W/W—BAKER/W WARMER SET



*4QD—11" DIVIDED BOWL
7.75



4.75
*201—9" BOWL



*242
CORN DISH
2.50



*XO—3 OZ.
SINGLE SERVING BOWL
1.50



*BP—6 OZ. BEAN POT
OR CUSTARD
2.75



*4XL—24 OZ. SALAD
OR GUMBO
3.75



*243—6½" CRESCENT SALAD
2.50



*249 TACO HOLDER
BOXED 2 PER BOX 10.00
Not Available in Flame



*4D—2 QT. PITCHER
9.25

THIS PAGE AVAILABLE IN PRAIRIE GREEN, DESERT GOLD, BROWN SATIN, COFFEE BROWN & ROBIN EGG BLUE, EXCEPT WHERE NOTED*

*AVAILABLE IN: 10 STANDARD COLORS PLUS COFFEE BROWN AND NAVY BLUE — EXCEPT WHERE NOTED.

ADD 50% FOR FLAME. Dinnerware Not Available in Terra Cotta. SIZES ARE APPROXIMATE AND MAY VARY SLIGHTLY. Page 23

MAYAN-AZTEC Pattern

AVAILABLE IN: Desert Gold, Prairie Green and White Sand.



DESERT GOLD



WHITE SAND



PRAIRIE GREEN

**7LS-45 PC. SERVICE SET
FOR EIGHT, BOXED 137.50**

- | | |
|------------------|------------------|
| 8 - Cups | 1 - 13" Platter |
| 8 - Saucers | 1 - Creamer |
| 8 - 14 Oz. Bowls | 1 - Sugar |
| 8 - 7" Plates | 1 - Sugar Lid |
| 8 - 10" Plates | 1 - Serving Bowl |

**7DTS-25 PC. DELUXE
STARTER SET-BOXED 75.00**

- Includes: Regular 20-Pc. Set
Plus 1-13" Platter
1-Creamer
1-Sugar
1-Sugar Lid
1-Serving Bowl

**7TS-20 PC. STARTER SET
FOR FOUR, BOXED 65.00**

- | |
|-----------------------------|
| 4 - Cups |
| 4 - Saucers |
| 4 - 7" B & B Plates |
| 4 - 10" Plates |
| 4 - 14 oz. Chili-Soup Bowls |

1,000 YEARS before Columbus "discovered" America, there flourished a civilization in this country whose artistic, social, and religious standards far surpassed any European peoples up to that time. Many archeologists not only compare the art and architecture of the Mayans and Aztecs favorably with that of ancient Egypt, but in many respects prefer their achievements in art importance. THESE were the FIRST Americans.

It is well established that the nucleus of American Indian tribes spread from the Great Southwest region. Our particular interest is in those who went South—the Mayans and Aztecs. They have given to the world some of its richest art treasures. The "golden age" of Mayan Art, in which they developed their pantheon, built their temples, perfected their Arts, social structure and government, occupied the first few centuries after Christ.

The Great Temple in Copan, Yucatan, built to the War Diety, was completed just before the Spanish invasion. The temple compound covered almost a quarter square mile,

comprising seventy-eight buildings — a most stupendous achievement and a monument to architectural beauty.

The most widely known of the Mayan and Aztec arts are the numerous hieroglyphs. They were used profusely on buildings, altars, monuments, and other such places, not only for embellishments, but for the recording of information. The decorations on the stairway of Copan alone were composed of over 2,500 different glyphs. Freehand methods prevailed entirely, for their art was their only written language.

Pottery has always evidenced every strata of culture. Fragments of pottery have been found where all other records have been destroyed, even in prehistoric times. Throughout the long history of all Indian tribes, pottery has been the universal art. The pottery of the ancient Southwestern Indians challenges comparison in color, form, and mastery of line with that of the Greek and Orientals.

It is through the inspiration of this wealth of beauty that FRANKOMA has created its Mayan-Aztec tableware.



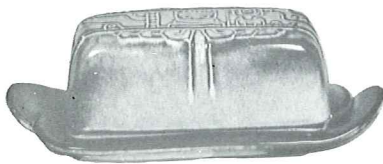
7V-2 QT. BAKER/BEAN POT 9.25
7V/W-BAKER & WARMER, SET 16.50



7W-3 QT. BAKER/BEAN POT 13.25
7W/W-BAKER & WARMER, SET 20.50



7H-SALT & PEPPER 4.75



7K-BUTTER DISH 6.50



7PS-9" TRAY 3.75



7J-2 CUP TEAPOT 6.50



7T-6 CUP TEAPOT 9.25



7FL-10" PLATE 6.00
7F-9" PLATE 4.00
7G-7" PLATE 3.50
7E-5" SAUCER 2.75

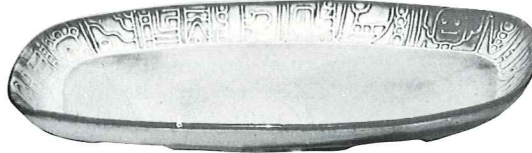


7B-SUGAR WITH LID 5.00



7A-6 OZ. CREAMER 3.25

7AB-CREAM & SUGAR SET 8.00



7QS-13" STEAK PLATTER (SHALLOW PLATTER) 5.00



7Q-13" DEEP PLATTER 7.75



7FC-15" CHOP PLATE 25.00



7TP-17" AZTEC OVAL PLATTER 17.50



7D-2 QT. PITCHER 9.25



7C-CUP 3.25



*C4-12 OZ. COFFEE MUG 3.25



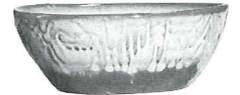
7M-14 OZ. MUG 4.50



7XO-8 OZ. FRUIT 2.75



*243-6 1/2" CRESCENT SALAD 2.50



7X-14 OZ. CHILI-SOUP 3.25



7XL-20 OZ. SALAD 3.75



7N-1 QT. VEGETABLE BOWL 4.75



*242 CORN DISH 2.50

THIS PAGE AVAILABLE IN PRAIRIE GREEN, DESERT GOLD, AND WHITE SAND.

*AVAILABLE IN 10 COLORS — ADD 50% FOR FLAME NO TERRA COTTA

SIZES ARE APPROXIMATE AND MAY VARY SLIGHTLY.

WAGON WHEELS Pattern

AVAILABLE AS REPLACEMENT PIECES ONLY - NO LONGER AVAILABLE IN SETS
AVAILABLE IN PRAIRIE GREEN AND DESERT GOLD.



94B—SUGAR WITH LID 5.00



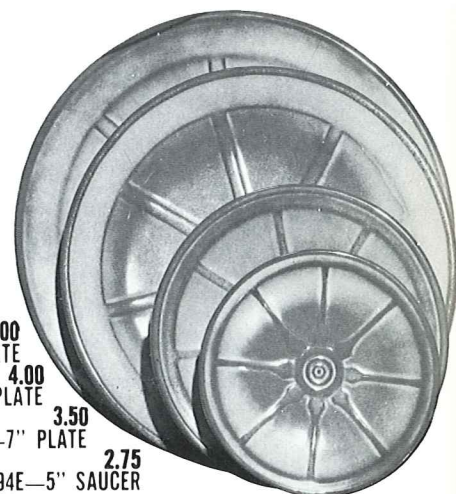
94A—8 OZ. CREAMER 3.25
94AB—CREAM & SUGAR SET 8.00



94J—2 CUP TEAPOT 6.50



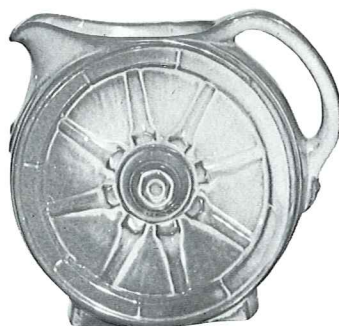
94M—16 OZ. MUG 4.50



94FL—10" PLATE 6.00
94F—9" PLATE 4.00
94G—7" PLATE 3.50
94E—5" SAUCER 2.75



9.25 94V—2 QT. BAKER/BEAN POT
16.50 94V/W—BAKER W/WARMER SET



94D—2 QT. PITCHER 9.25



94L—12 OZ. TUMBLER 3.75



94C—5 OZ. CUP 3.25



94H—SALT & PEPPER 4.75



13.25 94W—3 QT. BAKER/BEAN POT
20.50 94W/W—BAKER/W WARMER SET



94N—1 QT. VEGETABLE BOWL 4.75



94Q—13" PLATTER 7.75



94P—17" PLATTER 17.50



94XO—6 OZ. DESSERT 2.75



94X—14 OZ. CEREAL 3.25



94XL—20 OZ. BOWL 3.75

SPECIAL STATE & SOUVENIR ITEMS

Available only in Desert Gold, White Sand, Prairie Green, Flame and Coffee Brown. — Add 50% for Flame



OK-1—OKLAHOMA PLATE 4.00



TEX-1—TEXAS STATE PLATE 4.00



7FS—CHEROKEE ALPHABET PLATE 4.00



7TR—Cherokee Alphabet 3.00



10TR—Iowa Trivet 3.00



SCTR—Scissortail Trivet 3.00

8½" STATE PLATES—PLATES FOOT DRILLED FOR HANGING



C16—12 OZ. OKLAHOMA MUG 3.75



C18—SCISSORTAIL MUG 3.75



C1R—ROAD RUNNER 12 OZ. MUG 3.75



459—4½" TEXAS ASH TRAY 3.00



461—3½" OKLAHOMA ASH TRAY 2.75

FRANKOMA

CHRISTMAS MEMORIAL PLATES

AMERICA'S FIRST ANNUAL LIMITED EDITION CHRISTMAS PLATE SERIES



1965
"Good Will Towards Men"



1966
"Bethlehem Shepherds"



1967
"Gifts for The Christ Child"



1968
"Flight into Egypt"



1969
"Laid in a Manger"



1970
"King of Kings"



1971
"No Room in the Inn"



1987
"GOD'S CHOSEN FAMILY"



1988
"THE GUIDING LIGHT"

**Boxed
\$12.00**

In 1965 The Late John Frank, Artist and Founder of Frankoma Pottery created the first annual Christmas plate made in America. They were inspired by the Christmas story and the fact that the life of Christ has been the inspiration of more "Art" in all of its mediums, than any one subject in the history of the world. A self imposed demand was that every plate should have a scriptural background for each years renderings. No other pottery to our knowledge has attempted such a religious annual commemorative plate in the history of America.

They are done in low bas-relief, with sharp enough detail, and sufficient good modeling as to make each plate a treasured piece of **sculpture**, as well as tell a story relative to Christmas time and the life of Christ. They are done in a semi-translucent "Della Robbia" white glaze. The plate is 8½ inches in diameter; the master mold was signed by Mr. Frank through 1973. Beginning in 1974 the master mold is signed by his daughter Joniece Frank; all plates are copyrighted. The production is limited to those that are actually sold up till about the 10th of December. The master mold is destroyed on Christmas eve, and there are none made after that. The edition is limited to that year.

These plates are introduced in early spring and only sold through Frankoma Pottery dealers, for it was created as a bonus for their participation and selling Frankoma Pottery. We have tried to keep the price very reasonable so that more people can afford to own them, collect and enjoy them.

We hope they will be a spiritual inspiration and reminder of the lasting value of the scriptures, and a blessing to all those who possess them.

PAST ISSUES NO LONGER AVAILABLE FROM FACTORY



1972
"Seeking The Christ Child"



1974
"She Loved and Cared"



1976
"The Gift of Love"



1978
"All Nature Rejoiced"



1973
"The Annunciation"



1975
"Peace on Earth"



1977
"Birth of Eternal Life"



1979
"The Star of Hope"



1986
"For Thee I Play My Drum"



1985
"The Angels Watched"



1984
"Faith, Hope and Love"



1983
"The Wise Men Bring Gifts"



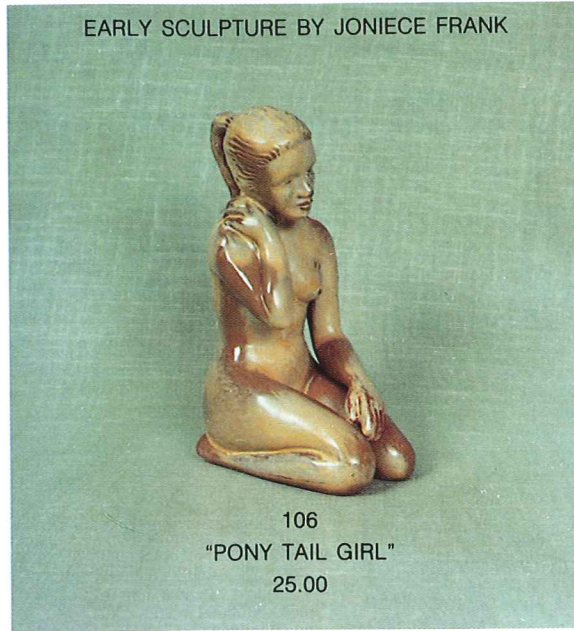
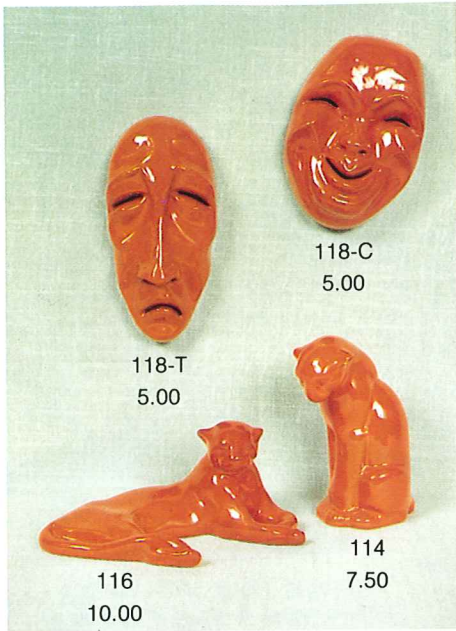
1982
"The Wise Men Rejoice"



1981
"O, Come Let Us Adore Him"



1980
"Unto us a Child is Born"



CREATIONS BY GRACE LEE



GRACE LEE



"THE YOUTHFUL MADONNA"
 F.P. 1986
 RUBBED BISQUE ONLY

Boxed
 \$15.00



5.00 109-BABY BIRD



5.00 108-MOTHER BIRD

AVAILABLE IN ALL THIRTEEN COLORS.
 ADD 50% FOR FLAME.



REPRODUCTIONS OF WILLARD STONE'S WOOD CARVINGS

Today's homes are "confines around our treasures", no matter what they "cost". Only a few can afford the "originals" of masters, but even the meagerest of homes are entitled to be enriched by living with good reproductions of them. All of the originals of the items we reproduce, are owned by Frankoma.

The wood sculpture of WILLARD STONE, a Cherokee, is a part of most museums, especially of the Southwest. His unique down to earth and humanistic style has brought him into many of the leading art galleries in America. We try to faithfully reproduce the few we are privileged to own.

MARE AND COLT - #103
 12" TALL - 7.50

INDIAN MAIDEN - #101
 12" TALL - 7.50

ONLY in:
 Rubbed Bisque

SQUIRREL - #105
 6" TALL - 5.00

COYOTE - #102
 12½" TALL - 7.50

INDIAN MADONNA #104 - 14" TALL - 15.00
 AVAILABLE IN Rubbed Bisque, Navy Blue & White

FRANKOMA POTTERY, INC

Box 789, Sapulpa, Okla. 74067
 Okla. Res. (918) 224-5511
 Other (800) 331-3650

ORDER BLANK

Date _____
 Shipping _____
 Date _____

RETAIL
Postage and Insurance Table

Pottery	Postage
0 to \$ 7.49	\$2.00
\$ 7.50 to \$14.99	\$2.50
\$15.00 to \$24.99	\$3.00
\$25.00 up	15% of Order

Ordered by: _____
 Name _____
 Address _____
 City _____ State _____ Zip _____

Ship to: _____
 Name _____
 Address _____
 City _____ State _____ Zip _____

PLEASE SPECIFY METHOD OF PAYMENT

- Check or Money Order Enclosed \$ _____
- Master Charge
- Visa

CREDIT CARD NUMBER

M/C INTER											EXPIRATION DATE					
BANK #											MONTH/YEAR ____/____					

NO C.O.D. Shipments

Signature _____

Quantity	Stock No.	COLORS												Description	Unit	Extension	
		Black	Green	Gold	Terra Cotta	White	Brown	Yellow	Blue	Coffee Brown	Navy	Mount. Haze	Flame				
																Pottery Total	
																Okla. Res. Only 4% Tax	
																Postage & Ins. from Table	
																TOTAL: Check Enclosed	

Order Authorized By: _____

RETAIL MAIL ORDERING

Our mail order service is used by many people to continue with their Frankoma Patterns or Collectables, and also for that special gift for a friend. To mail order, please use the enclosed order form to insure receiving the correct items and colors. After completing your order, use the Postage and Insurance Table to determine costs. Add 3.25% sales tax, if you are an Oklahoma resident; and please enclose either a check or Visa/MC number for the full amount of pottery plus the charges from the table on the front.

Seconds are sold through our Gift Shop, however they cannot be ordered or shipped by mail.

(Please Allow 4-6 Weeks For Delivery)

FOLD

STAMP

FRANKOMA POTTERY, INC.
P.O. Box 789
Sapulpa, OK 74067

FOLD

Frankoma's Gift Shop is located adjacent to the Frankoma Factory in Sapulpa, Oklahoma. The Gift Shop is open Monday through Saturday from 8:00 A.M. until 6:00 P.M. Sunday 12:30 P.M. until 6:00 P.M.

(OPEN MANY HOLIDAYS)

TOURS OF FRANKOMA

Frankoma offers plant tours of Frankoma Pottery Monday through Friday from 8:00 till 2:45. We invite you to stop by and see how Frankoma is made.

Thank You ----

FROM

Frankoma Pottery

FRANKOMA - An Idea Takes Shape

Process of Manufacturing

Frankoma is hand crafted earthenware pottery. Frankoma is a complete pottery; we dig our own clay in Sapulpa, process it; develop and mix all our own glazes and colors; make our own molds and create our own designs.

Our pottery is formed in one of **two ways**; casting and pressing. Casting: (1) The clay is mixed with water to make a liquid clay called "slip", then poured into plaster molds. During the 45 minutes the slip sits in the mold, water is absorbed by the mold creating harder clay against the walls of the mold. The slip is then poured out, the clay the water was taken from remains, thus creating the piece. (2) After 4 more hours of drying and preparation the piece is removed from the mold to dry overnight. Pressing: (3) Because of the nature of the clay, some pieces cannot be made by casting. Therefore, we use a hydraulic press. The clay is placed between the two pieces of a mold. The top of the mold lowers up to 50 tons of pressure and forms the piece. All plates and flat pieces are made on the press.

Regardless if a piece is cast or pressed, it must be dried and then trimmed. (4) Each piece is hand trimmed. The rough edges are removed with a paring knife. (5) Then, to complete the smoothing process, the piece is wiped with a wet sponge. Frankoma is unique in that we fire our pottery only once; therefore, after the trimming, it is ready for the glaze, (glaze is the color; glaze is basically a liquid glass that melts and fuses with the clay when it is fired). The glaze is applied on the inside by "dipping". The glaze is simply poured in and then poured out, and it coats the inside. (6) Then the outside is glazed with a spray gun. The application of the glaze is very important. It must be applied just right, not too thin and not too thick. (7) The pottery is then fired for 18 hours at approximately 2,000 degrees. During the firing process the glaze melts, changes color, and becomes the piece of pottery you enjoy in your home. (8) All Frankoma's designs are original. This requires a complete well equipped mold shop with competent mold makers to effectively complete the designers ideas for production.

Because of the great demand and a desire to always maintain Frankoma as a leader in the ceramic field the plant has recently expanded to 79,000 square feet, employing 140 people who make up the Frankoma Family.

You are cordially invited to tour the plant during working hours.

COME SEE US . . .

There has been much said during the last few years about "lead poisoning" from using pottery dishes and containers. Shown here is the Official Seal of Certification, that this ware is ALL safe from lead poisoning.

• Practically all pottery wares made in the U.S. are so certified, so . . .



Buy Frankoma!
Be Safe • Buy American



(1) Slip Casting



(3) Pressing



(5) Sponging



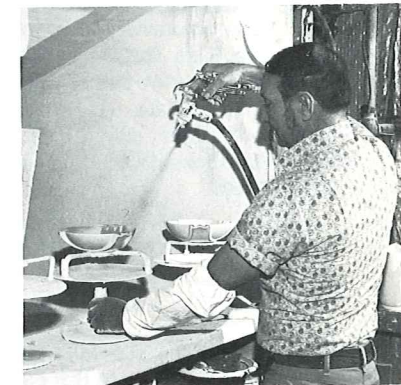
(7) Stacking kiln for firing.



(2) Removing piece from mold.



(4) Trimming with knife.



(6) Glazing



(8) Making a Mold

AVAILABLE IN 1988
 COLOR: ONYX BLACK
 5 oz. COFFEE MUG 5.00



1988 ELEPHANT MUG

The original "Elephant Mug" was created for the National Republican Womens Club and copyrighted by Frankoma in 1969 and patented in 1970. The "Donkey Mug" was created in 1975 copyrighted and patented. Now each year these mugs are produced by Frankoma as a stock item. The current mugs are only available during that year — Each year the color is different.

© F.P. 1975, U.S. Pat. No. D605,739

© F.P. 1969, U.S. Pat No. D214,868

Past Issues No Longer Available From Factory

President and Vice President name on mug in the Inaugural year.

AVAILABLE IN 1988
 COLOR: ONYX BLACK
 5 oz. COFFEE MUG 5.00



1988 DONKEY MUG

1968 — White; 1969 — Flame; 1970 — Blue; 1971 — Black; 1972 — Prairie Green; 1973 — Desert Gold; 1974 — Coffee; 1975 — Autumn Yellow; 1976 — Centennial Red; 1977 — Pink; 1978 — Moss; 1979 — Brown Satin; 1980 — Terra Cotta; 1981 — Celery Green; 1982 — Robin Egg Blue; 1983 — Wisteria; 1984 — Mulberry; 1985 — Navy Blue; 1986 — Mountain Haze. 1987 — Lemon.

1975 — Autumn Yellow; 1976 — Centennial Red; 1977 — Pink; 1978 — Moss; 1979 — Brown Satin; 1980 — Terra Cotta; 1981 — Celery Green; 1982 — Robin Egg Blue; 1983 — Wisteria; 1984 — Mulberry; 1985 — Navy Blue; 1986 — Mountain Haze. 1987 — Lemon.



BC-87 Commemorative Bi-Centennial Plate: GOLD only. 1987 Plate — "We the People"; 1988 Plate — "Radification": Gold only. BC87 — \$12.00 Boxed BC88 — \$12.00 Boxed

IW — INKWELL with "1787 — We The People — 1987" litho. With Litho; Gold & White Only — \$7.50 Plain — available in all colors — \$6.00

A series of 5 plates are planned in celebration of the Bi-Centennial Anniversary of the Constitution.

This celebration extends for 5 years. One plate each year will be produced depicting each year's significance to the whole of the final Constitution ending in 1991. An historical and educational collection.

Specialty Advertising, Premiums, Promotions

Specialty advertising, quality and affordable price. Schools; Companies; organizations. We put your logo on quality merchandise. Details available upon request.

HOW TO MAINTAIN THE BEAUTY OF FRANKOMA:

Frankoma's hand-mixed glazes are designed not only for beauty, but also for durability. The following simple steps will insure that beauty and durability.

1. Frankoma's glazes are durable, but the alloys in some flat ware may occasionally mark the finish. If these marks should appear on your pottery, a mild powdered cleanser should be used to remove them. Normal mild household cleansers will not harm the finish.
2. Cups and mugs should be rinsed after serving coffee or tea to avoid stains. Should a stain buildup occur you could restore the beauty of your cups by soaking them in a solution of 1/2 liquid bleach and 1/2 water.

HOW AND WHERE YOU CAN PREPARE FOOD:

Frankoma is safe in conventional ovens, microwaves and dishwashers. However, it should never be used from cold temperatures into any heating unit. Frankoma should never be used directly on heat from either electric or gas ranges. Room temperature is best for placing of dinnerware in the oven. Hot serving pieces should never be placed on a cold or wet surface. For reasons unknown to us, Frankoma pieces will retain heat in a microwave and other similar pieces remain normal.

PROTECTING DELICATE SURFACES:

1. Due to Frankoma's unique red-firing clay it is necessary for each and every piece to have an unglazed surface on the bottom. Due to the nature of the product there may occasionally be an abrasive surface on the unglazed area. For this reason it is recommended to always use placemats or a tablecloth with any pottery, stone ware or china.
2. Pottery floral containers and planters require the same care as glass. Always place your container on a plate of some type. Condensation may occur on pottery as it does on glass, and a plate will protect your good wood finishes.

WARRANTY:

Frankoma Pottery carries a full three-year warranty against defects in materials or workmanship. Our warranty does not cover chipping. Frankoma Pottery is manufactured with as much durability as possible; however, chipping can occur if contact is made with another object. If you find you have a defective piece, contact your local representative or Frankoma Pottery, Customer Service Department, P.O. Box 789, Sapulpa, OK 74067.

You are a welcomed guest at the factory any time. Should you come during working hours, we will be glad to conduct you through the plant to see Frankoma made. (Tours Monday thru Friday, 8:00 a.m. - 2:30 p.m. Gift Shop hours - Monday thru Saturday 8:00 a.m. - 6:00 p.m. Sunday - 12:30 p.m. - 6:00 p.m.)

FRANKOMA POTTERY, INC.

1-918-224-5511 (Oklahoma) • 1-800-331-3650
 P. O. Box 789 • 2400 Frankoma Road
 Sapulpa, Oklahoma 74066

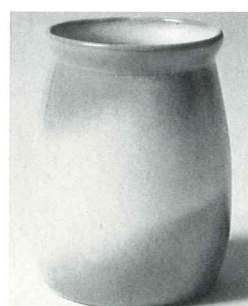
NEW FOR 1988



802 - 6 oz. Jelly Jar/w
Lid - 5.00



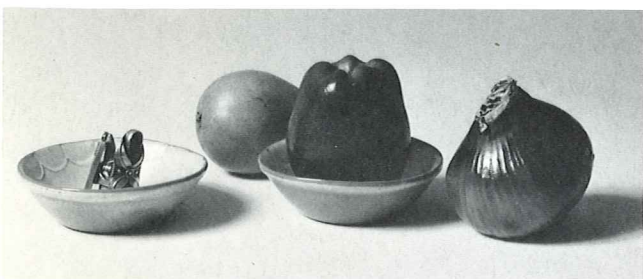
T7SP - 4 1/2" Simmer Pot/Boxed - 8.00



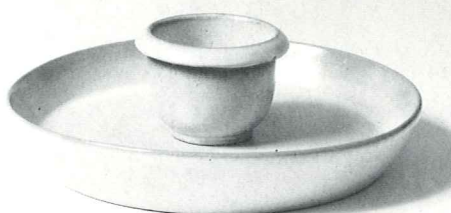
SJ - 6 1/2" Spoon
Jar - 7.00



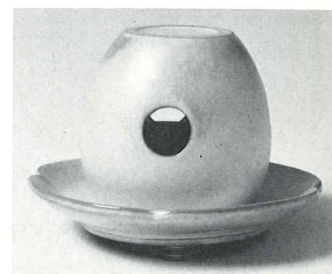
MC/SP 4 1/2" Milk Can
Salt & Pepper - 8.00 pr.



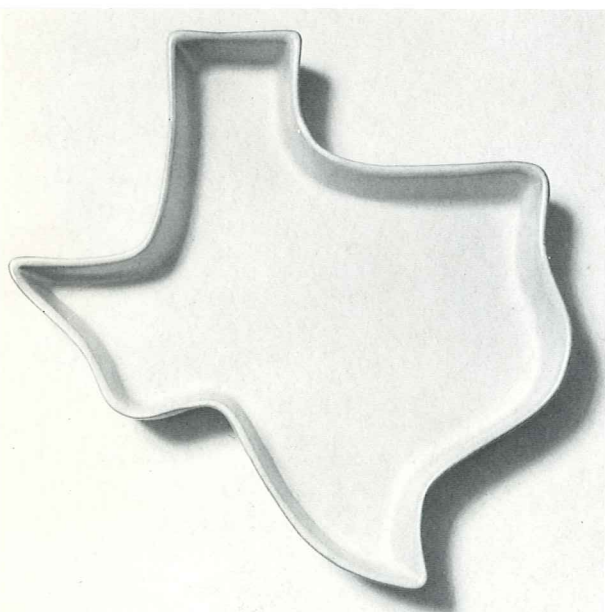
RH - 4 1/2" Apple Bake/Ring Holder - 4.00



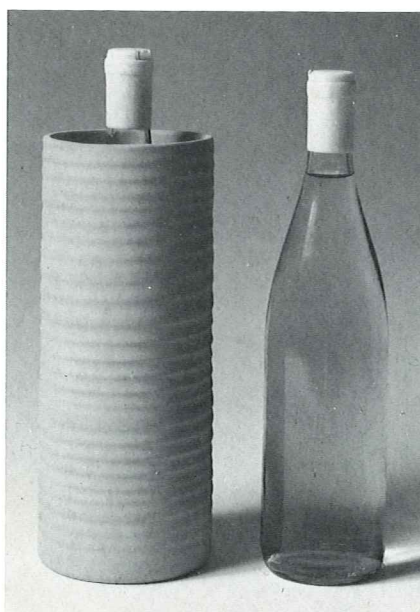
91/BP - 10" Round
Salsa Chip & Dip - 8.00



T7LT - 5" Tall
Patio Light - 9.00



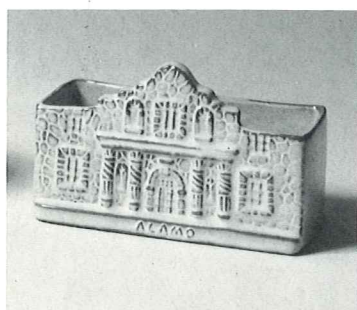
TXBP - 12 x 12 x 1 1/2" - Texas Bake Pan - 7.00



72T - 10" Tall Wine Cooler - 6.50
TERRA-COTTA ONLY



129 - 8 1/2" Sun Dial - 7.50



397 - 6 1/2" Long Alamo
Planter - 6.00



OFTR - 6" Oklahoma Flag
Trivet - 3.00



WBTR - 6" White Buffalo
Trivet - 3.00

Made in all 13 colors

FRANKOMA POTTERY, INC.

SAPULPA, OKLAHOMA 74067

(Phone 1-918-224-5511 - Okla.)
1-800-331-3650